



CONSORCIO  
**IUYET**



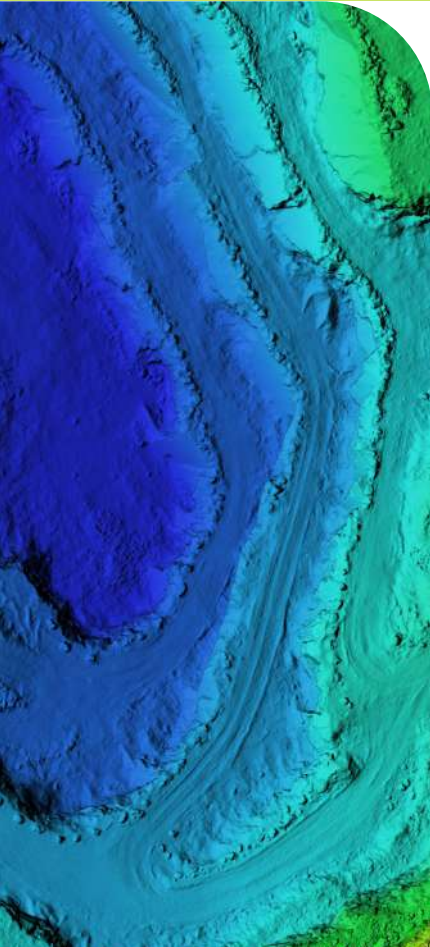
# ECHOBOAT

## BATIMETRÍA MULTI HAZ

### ECHOBOAT-RCV

The EchoBoat-RCV system is a remotely controlled hydrographic survey platform.

Remote control of the survey vessel is easy thanks to GPS position and heading, available in real time on shore via a remote desktop.



#### APLICACIONES

- Bathymetric surveys in: marinas, canals, bays, coasts, as well as dredging or environmental projects.

#### BENEFITS

- Tailor-made instrumentation according to customer needs.
- Access to remote areas.
- Turnkey operation that can be equipped with single beam, multibeam and side scan sonar systems.
- Multibeam system with echo sounder whose transducer is capable of simultaneously emitting a range of acoustic waves.
- It allows sound waves to be emitted that measure the distance between the water surface and the seabed, as well as objects suspended in the water or resting on the seabed.